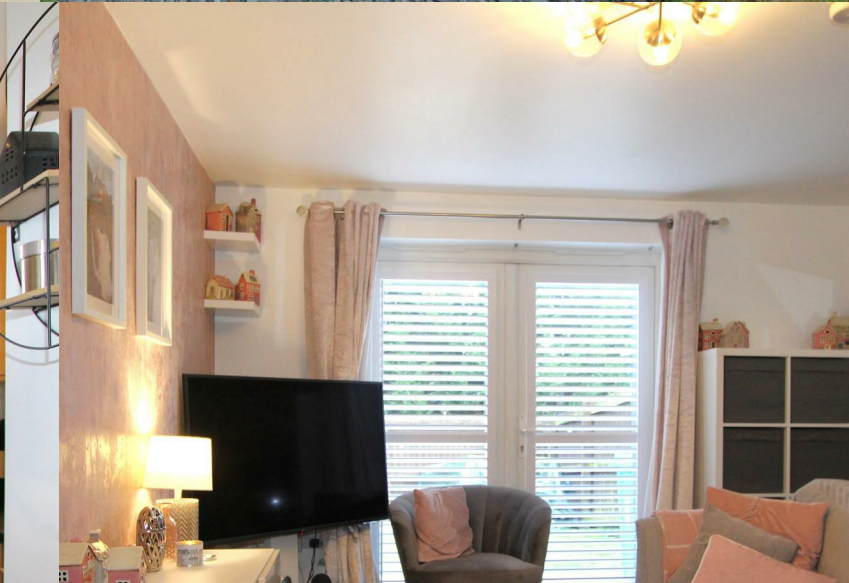




RIDGEWAY

RESIDENTIAL SERVICES



5 Edale Close, Fairfield And Howley, Warrington,

, WA1 2GR

Offers Over £195,000



2



2

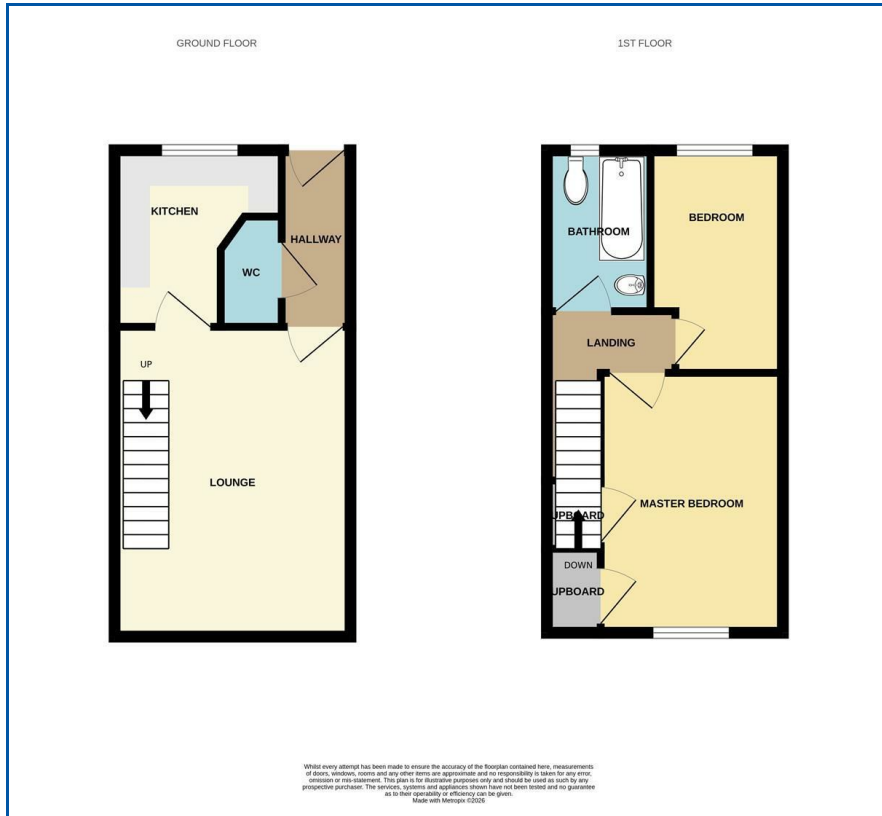


1



C

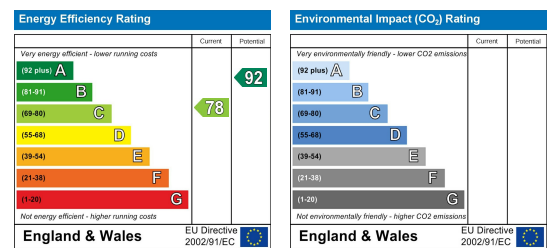
Floor Plan



Area Map



Energy Efficiency Graph



Viewing

Please contact us on 01925 756931 if you wish to arrange a viewing appointment for this property or require further information.

- Semi Detached Property
- Immaculately Presented
- Viewing Essential
- UPVC Double Glazing
- Driveway
- Friendly Development
- Modern Day Living
- 2 Good Sized Bedrooms
- Gas Central Heating
- Gardens

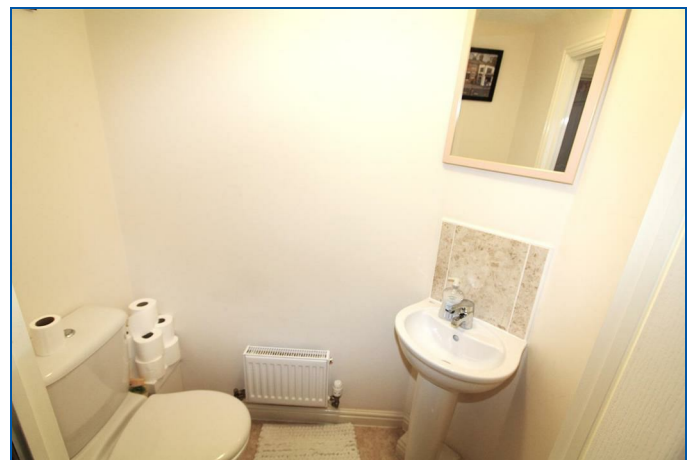
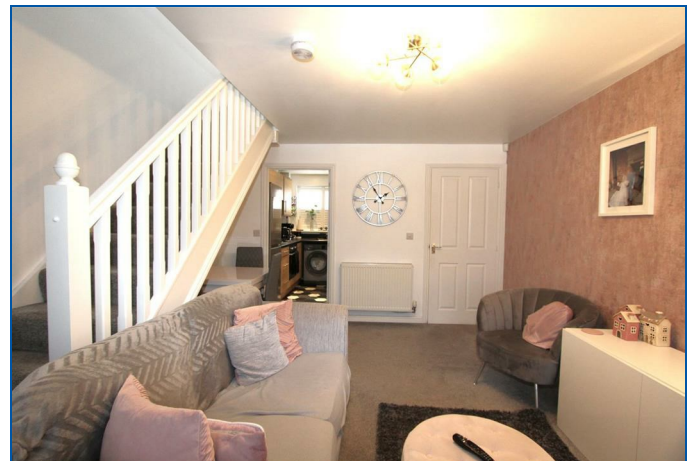
Welcome to this charming semi-detached house located on Edale Close in the desirable area of Fairfield and Howley, Warrington. This delightful property, built after the year 2000, offers a perfect blend of modern living and comfort.

As you enter, you are greeted by a spacious reception room that provides an inviting atmosphere, ideal for both relaxation and entertaining guests. The layout is thoughtfully designed, ensuring that the living space is both functional and appealing.

The house features two well-proportioned bedrooms, each offering a peaceful retreat for rest and relaxation.

The property is situated in a friendly neighbourhood, providing a sense of community while still being close to local amenities. With easy access to nearby parks, shops, and schools, this home is perfect for those seeking a balanced lifestyle.

This semi-detached house on Edale Close is an excellent opportunity for first-time buyers, small families, or anyone looking to downsize without compromising on quality. With its modern features and prime location, this property is sure to attract interest. Don't miss the chance to make this lovely house your new home.



These particulars, whilst believed to be accurate are set out as a general outline only for guidance and do not constitute any part of an offer or contract. Intending purchasers should not rely on them as statements of representation of fact, but must satisfy themselves by inspection or otherwise as to their accuracy. No person in this firm's employment has the authority to make or give any representation or warranty in respect of the property.